



# Bcl-7a Polyclonal Antibody

<b>Catalog No</b>	YP-Ab-01566
<b>Isotype</b>	IgG
<b>Reactivity</b>	Human;Mouse
<b>Applications</b>	WB;ELISA
<b>Gene Name</b>	BCL7A
<b>Protein Name</b>	B-cell CLL/lymphoma 7 protein family member A
<b>Immunogen</b>	The antiserum was produced against synthesized peptide derived from human BCL7A. AA range:21-70
<b>Specificity</b>	Bcl-7a Polyclonal Antibody detects endogenous levels of Bcl-7a protein.
<b>Formulation</b>	Liquid in PBS containing 50% glycerol, 0.5% BSA and 0.02% sodium azide.
<b>Source</b>	Polyclonal, Rabbit,IgG
<b>Purification</b>	The antibody was affinity-purified from rabbit antiserum by affinity-chromatography using epitope-specific immunogen.
<b>Dilution</b>	Western Blot: 1/500 - 1/2000. ELISA: 1/5000. Not yet tested in other applications.
<b>Concentration</b>	1 mg/ml
<b>Purity</b>	≥90%
<b>Storage Stability</b>	-20°C/1 year
<b>Synonyms</b>	BCL7A; B-cell CLL/lymphoma 7 protein family member A
<b>Observed Band</b>	22kD
<b>Cell Pathway</b>	
<b>Tissue Specificity</b>	Brain,Thalamus,
<b>Function</b>	disease:Chromosomal aberrations involving BCL7A may be a cause of B-cell non-Hodgkin lymphoma. Three-way translocation t(8;14;12)(q24.1;q32.3;q24.1) with MYC and with immunoglobulin gene regions.,PTM:Phosphorylated upon DNA damage, probably by ATM or ATR.,similarity:Belongs to the BCL7 family.,
<b>Background</b>	This gene is directly involved, with Myc and IgH, in a three-way gene translocation in a Burkitt lymphoma cell line. As a result of the gene translocation, the N-terminal region of the gene product is disrupted, which is thought to be related to the pathogenesis of a subset of high-grade B cell non-Hodgkin lymphoma. The N-terminal segment involved in the translocation includes the region that shares a strong sequence similarity with those of BCL7B and BCL7C. Two transcript variants encoding different isoforms have been found for this gene. [provided by RefSeq, Jul 2008],



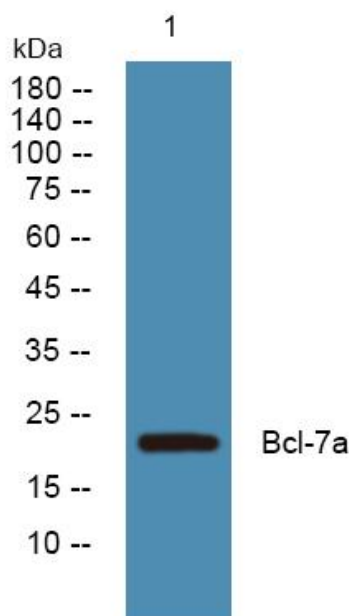
**matters needing attention**

Avoid repeated freezing and thawing!

**Usage suggestions**

This product can be used in immunological reaction related experiments. For more information, please consult technical personnel.

**Products Images**



Western blot analysis of lysates from SW480 cells, primary antibody was diluted at 1:1000, 4° over night